



SOMMARIO - SUMMARY

Mosaici d' Italia:	03
Gamma colori cubetti	04
Serie abbazie	10
Decoro a scacchiera serie Marostica	11
Gamma colori tessere	12
Serie palazzi e f.lla intrecci	14
Decoro a scacchiera serie dama	15
Gamma colori mattoncini a muretto	16
Gamma colori mattoncini pitagora	18
Gamma colori diamanti	20
Serie carnevale	22
Serie Brunelleschi	24
Serie Brunelleschi mix	26
Serie Giotto	27
Collezione Etrusca:	31
Gamma colori tessere	32
Gamma colori mixati	34
Serie fittile	35
Serie armilla	36
Serie chimera	37
Serie lapis e lapis graffiti	38
Serie magnus e magnus graffiti	39
Serie fimbria	40
I Sassi di Sassuolo:	43
Sasso piatto onda	44
Gera bianca	45
Saxum ornatus	45
Mosaico giareina onda	46
La ghiaietta del fiume Secchia	47
Fasce varana e fasce pescale	47
La fornace di Maranello	47
Fasce villa segrè e fasce San Michele	48
Fossili verdi e serie filiges	49
Melange tabacco e melange verde ramato	50
Tex gres bianco	51
Fasce melange tabacco e melange verde ramato... ..	51
Dati tecnici	54
Condizioni generali di vendita	56



Foto realizzate da FRANCESCO MARCHETTI

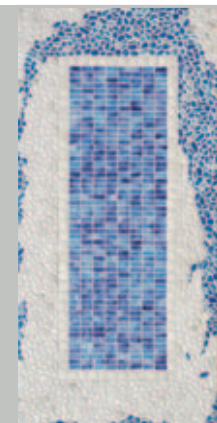
MOSAICI d' ITALIA



COLLEZIONE ETRUSCA



I SASSI di SASSUOLO

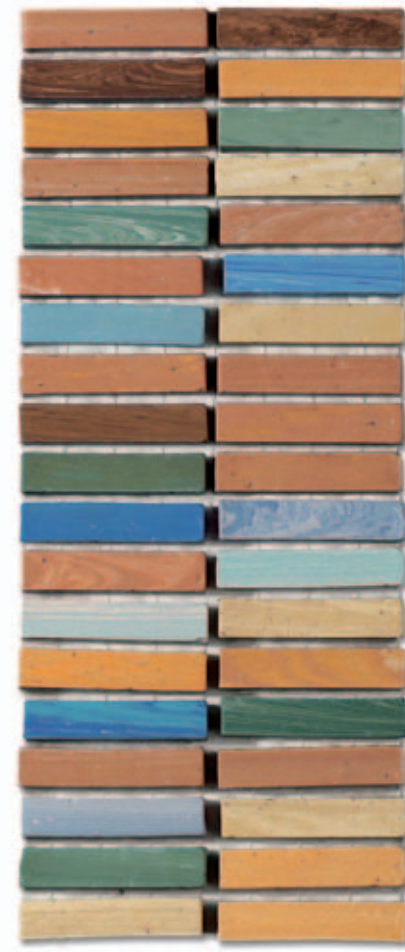




MOSAICI d' ITALIA

Il nome.....la materia.....l' idea, un progetto di notevole spessore. Una innovazione certa.....tutto assolutamente ed esclusivamente italiano.
 Gres porcellanato estruso, colori a tutta massa dalle innumerevoli melangiature; le sue caratteristiche tecniche certificano la massima affidabilità negli utilizzi più logoranti in interni ed esterni; un opus progettualmente diverso ma pur sempre un classico d'arte che impera da tremila anni.
 Con i Mosaici d'Italia si nobilitano le superfici piastrellate.

The name... the material... the idea...: a project of remarkable importance. From conception to completion this is an unparalleled and total Italian innovation. Extruded porcelain stoneware, whole-bodied colours and an infinite possibility of colours and shades. The technical characteristics assure the greatest reliability in usages wear for both internal and external areas. An opus differently projected but at the same time classic.
 A leitmotif in art that resounds through more than 3000 years of history. With Mosaici d'Italia the tile surfaces seem to move.



MOSAICI D'ITALIA

Gamma colori nei vari formati e pose su rete - A range of 17 different colours mounted on a nylon mesh



Cubetti cm 1x1x1 misura reale
Dot 1x1x1 cm actual dimension

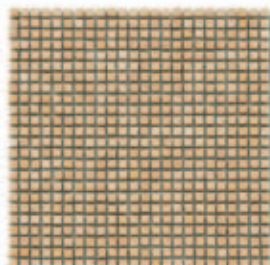
SOLARE*



Art. 0735 Le Ville romane 7,5x30 P18



Art. 0765 Le Terme romane 30x30 P41

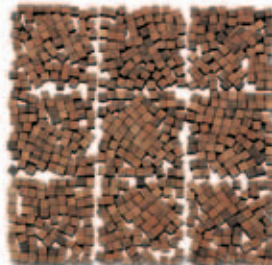


Art. 0818 30x30 M13 - M11

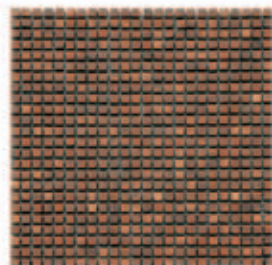
NOCE*



Art. 0733 Le Ville romane 7,5x30 P18



Art. 0763 Le Terme romane 30x30 P41

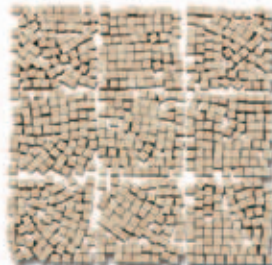


Art. 0816 30x30 M13 - M11

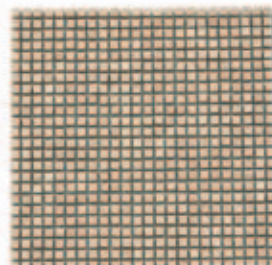
BEIGE



Art. 0724 Le Ville romane 7,5x30 P18



Art. 0754 Le Terme romane 30x30 P41

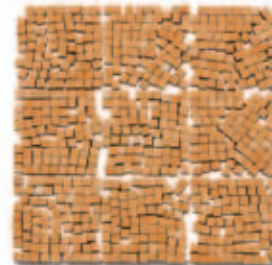


Art. 0804 30x30 M13 - M11

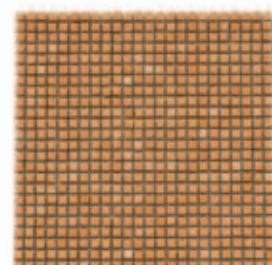
DORATO*



Art. 0728 Le Ville romane 7,5x30 P18



Art. 0758 Le Terme romane 30x30 P41

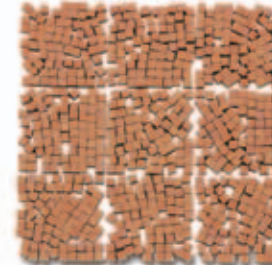


Art. 0811 30x30 M13 - M11

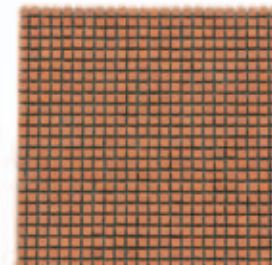
FOCATO*



Art. 0734 Le Ville romane 7,5x30 P18



Art. 0764 Le Terme romane 30x30 P41

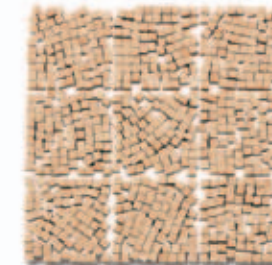


Art. 0817 30x30 M13 - M11

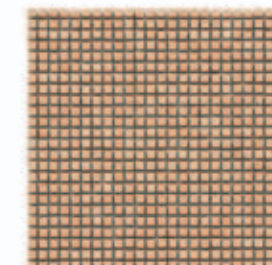
AMBRA*



Art. 0729 Le Ville romane 7,5x30 P18



Art. 0759 Le Terme romane 30x30 P41



Art. 0812 30x30 M13 - M11


P = cod. Prezzo al Pz. M = cod. Prezzo al Metro Quadro (quantità inferiore al pallet) M = cod. Prezzo al Metro Quadro (pallet completo)

* con aggiunta di chamottes puntinate rustiche * whit added rusticking speckled-effect chamottes

MOSAICI D'ITALIA

Gamma colori nei vari formati e pose su rete - A range of 17 different colours mounted on a nylon mesh

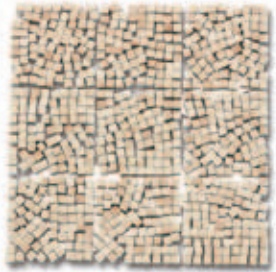


 Cubetti cm 1x1x1 misura reale
Dot 1x1x1 cm actual dimension

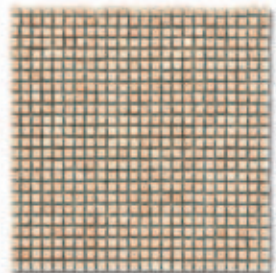
SABBIA *



Art. 0730 Le Ville romane 7,5x30 P18



Art. 0760 Le Terme romane 30x30 P41

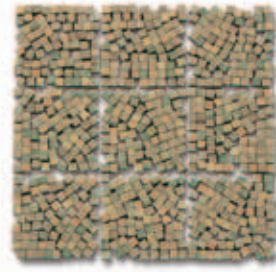


Art. 0813 30x30 M13 - M11

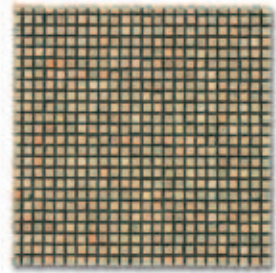
MUSCHIATO *



Art. 0732 Le Ville romane 7,5x30 P18



Art. 0762 Le Terme romane 30x30 P41

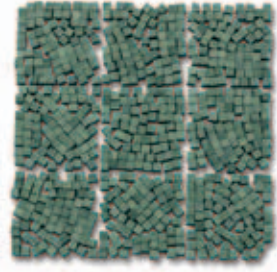


Art. 0815 30x30 M13 - M11

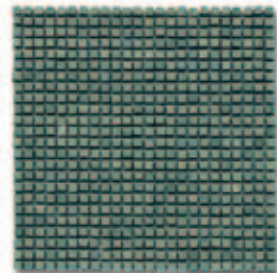
TERRA VERDE



Art. 0723 Le Ville romane 7,5x30 P18



Art. 0753 Le Terme romane 30x30 P41

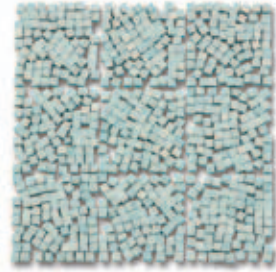


Art. 0803 30x30 M13 - M11

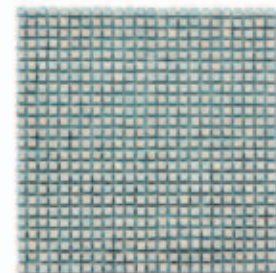
CELESTRINO



Art. 0720 Le Ville romane 7,5x30 P18



Art. 0750 Le Terme romane 30x30 P41

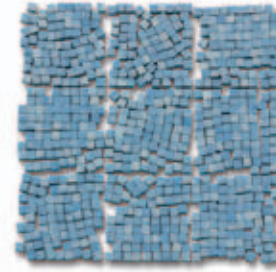


Art. 0800 30x30 M13 - M11

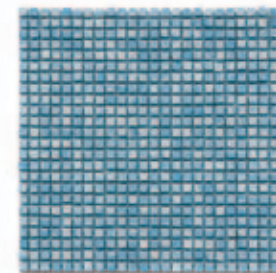
LAPISLAZZULI *



Art. 0736 Le Ville romane 7,5x30 P18



Art. 0766 Le Terme romane 30x30 P41

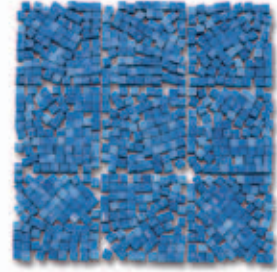


Art. 0819 30x30 M13 - M11

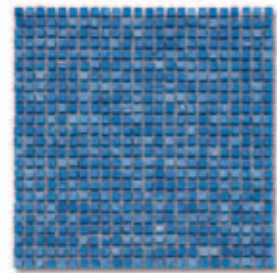
OLTREMARE



Art. 0725 Le Ville romane 7,5x30 P19



Art. 0755 Le Terme romane 30x30 P42



Art. 0805 30x30 M14 - M15

P = cod. Prezzo al Pz. M = cod. Prezzo al Metro Quadro (quantità inferiore al pallet) M = cod. Prezzo al Metro Quadro (pallet completo)

* con aggiunta di chamottes puntinate rustiche * whit added rusticing speckled-effect chamottes

MOSAICI D'ITALIA

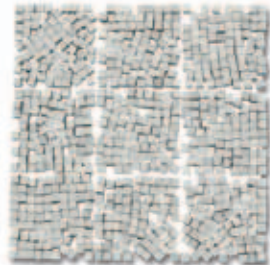
Gamma colori nei vari formati e pose su rete - A range of 17 different colours mounted on a nylon mesh

Cubetti cm 1x1x1 misura reale
Dot 1x1x1 cm actual dimension

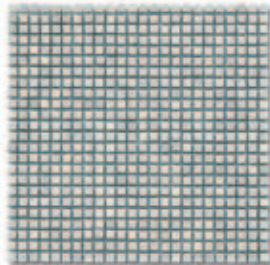
GRIGIO CALDO



Art. 0721 Le Ville romane 7,5x30 P18



Art. 0751 Le Terme romane 30x30 P41

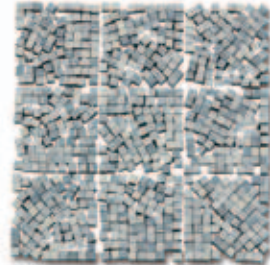


Art. 0801 30x30 M13 - M11

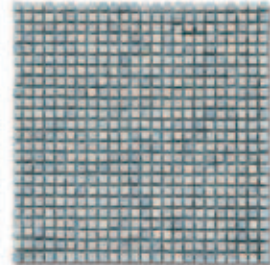
GRIGIO FREDDO



Art. 0722 Le Ville romane 7,5x30 P18



Art. 0752 Le Terme romane 30x30 P41

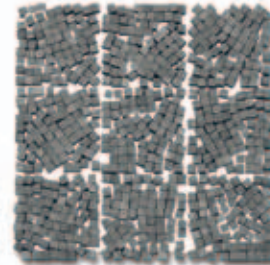


Art. 0802 30x30 M13 - M11

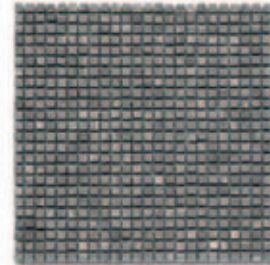
BUCCHERO *



Art. 0731 Le Ville romane 7,5x30 P18



Art. 0761 Le Terme romane 30x30 P41

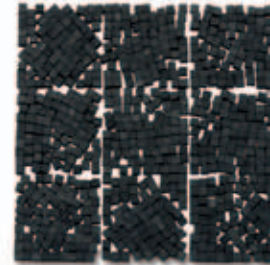


Art. 0814 30x30 M13 - M11

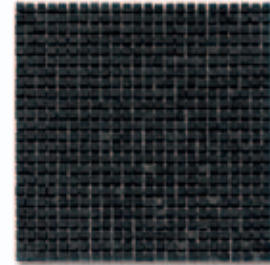
NERO



Art. 0726 Le Ville romane 7,5x30 P19



Art. 0756 Le Terme romane 30x30 P42

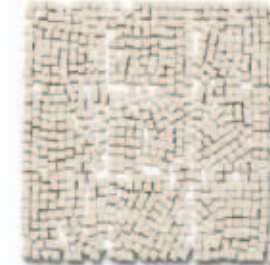


Art. 0806 30x30 M16 - M15

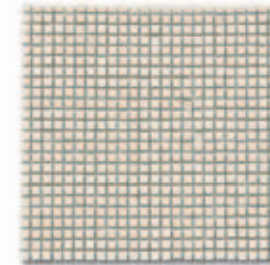
SALINO *



Art. 0727 Le Ville romane 7,5x30 P18



Art. 0757 Le Terme romane 30x30 P41



Art. 0810 cubetti 1x1x1 30x30 M13 - M11

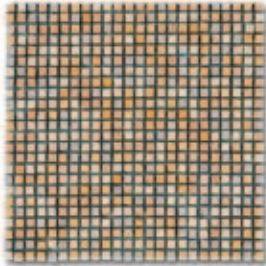


P = cod. Prezzo al Pz. M = cod. Prezzo al Metro Quadro (quantità inferiore al pallet) M = cod. Prezzo al Metro Quadro (pallet completo)

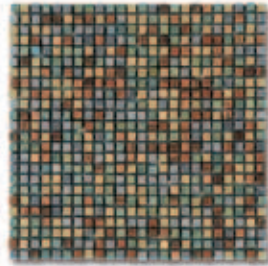
* con aggiunta di chamottes puntinate rustiche * whit added rusticing speckled-effect chamottes

SERIE ABBAZIE

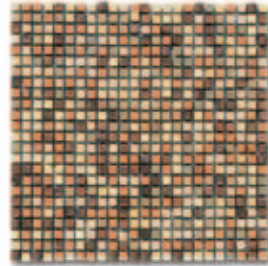
Colori mixati su rete cm 30x30 - Blended colours mounted on a nylon mesh size 30x30 cm



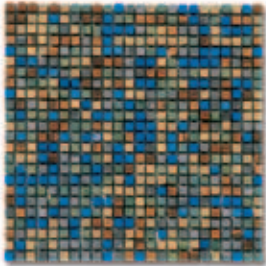
Art. 0822 S.Galgano 30x30 M18 - M16



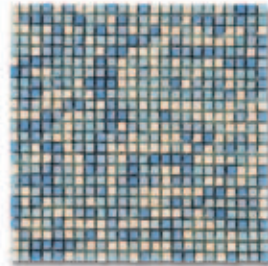
Art. 0823 Pomposa 30x30 M18 - M16



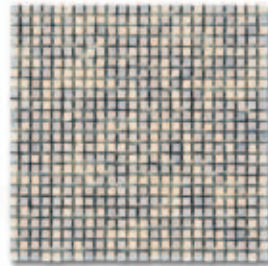
Art. 0824 Chiaravalle 30x30 M18 - M16



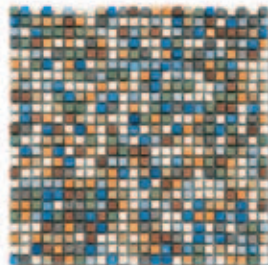
Art. 0825 Monteveglio 30x30 M18 - M16



Art. 0826 Nonantola 30x30 M18 - M16



Art. 0827 Montesacro 30x30 M18 - M16

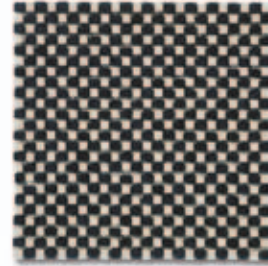


Art. 0828 Montecassino 30x30 M18 - M16

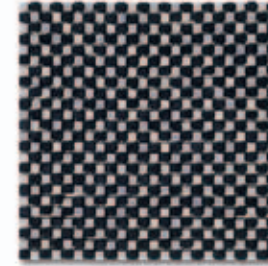
M - cod. Prezzo al Metro Quadro (quantità inferiore al pallet) M - cod. Prezzo al Metro Quadro (pallet completo)

DECORO SCACCHIERA SERIE MAROSTICA

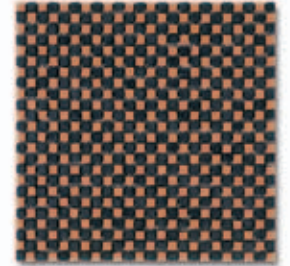
Colori mixati su rete cm 30x30 - Blended colours mounted on a nylon mesh size 30x30 cm



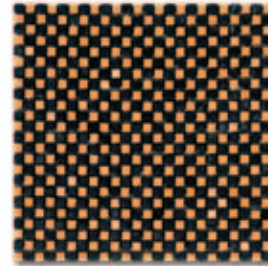
Art. 0838 nero/salino 30x30 M23 - M22



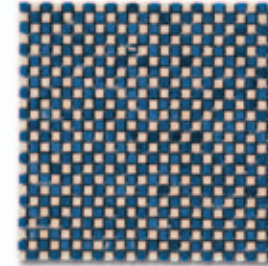
Art. 0839 nero/grigio freddo 30x30 M23 - M22



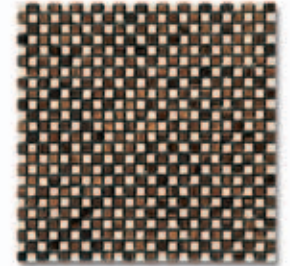
Art. 0840 nero/focato 30x30 M23 - M22



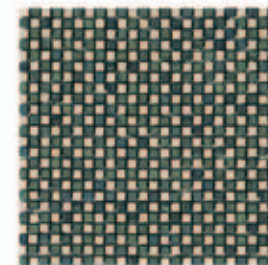
Art. 0841 nero/dorato 30x30 M23 - M22



Art. 0842 salino/oltremare 30x30 M23 - M22



Art. 0843 salino/noce 30x30 M23 - M22



Art. 0844 salino/terra verde 30x30 M23 - M22

M - cod. Prezzo al Metro Quadro (quantità inferiore al pallet) M - cod. Prezzo al Metro Quadro (pallet completo)

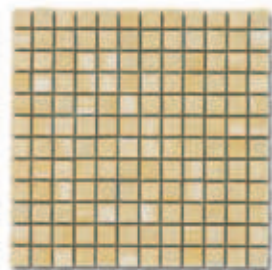
MOSAICI D'ITALIA

Gamma colori su rete cm 30x30 - A range of 17 different colours mounted on a nylon mesh size 30x30 cm

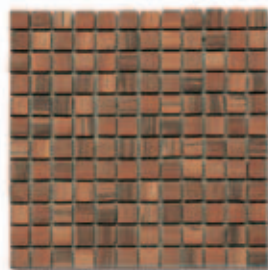


Tessere cm 2,5x2,5x0,75 misura reale
Dot 2,5x2,5x0,75 cm actual dimension

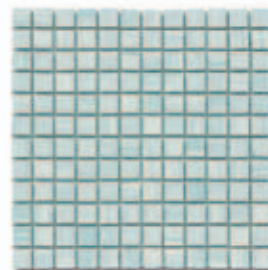
* con aggiunta di chamottes puntinate rustiche
* whit added rusticing speckled-effect chamottes



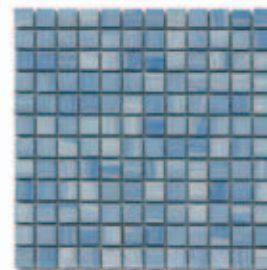
Art. 0873 Salare* 30x30 M9 - M8



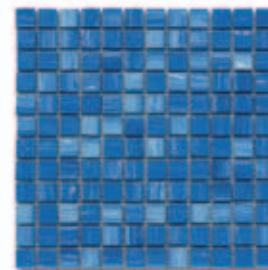
Art. 0871 Noce* 30x30 M9 - M8



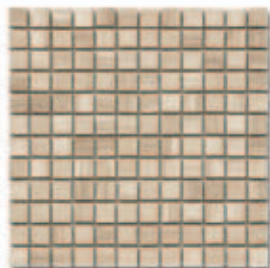
Art. 0855 Celestrino 30x30 M9 - M8



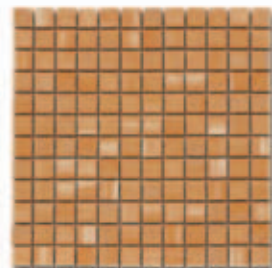
Art. 0874 Lapislazzuli* 30x30 M9 - M8



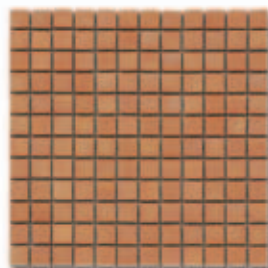
Art. 0860 Oltremare 30x30 M12 - M10



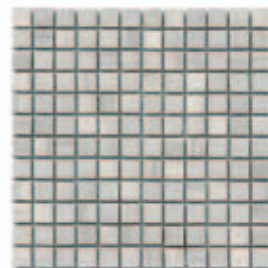
Art. 0859 Beige 30x30 M9 - M8



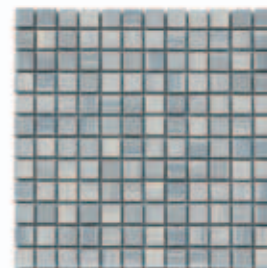
Art. 0866 Dorato* 30x30 M9 - M8



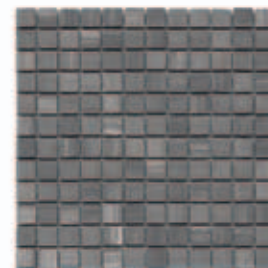
Art. 0872 Focato* 30x30 M9 - M8



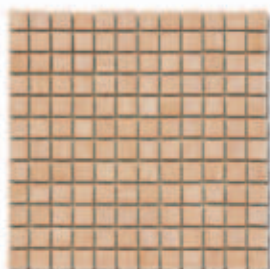
Art. 0856 Grigio caldo 30x30 M9 - M8



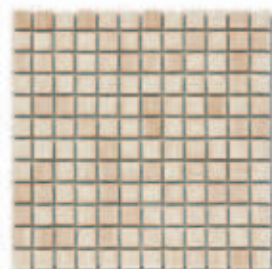
Art. 0857 Grigio freddo 30x30 M9 - M8



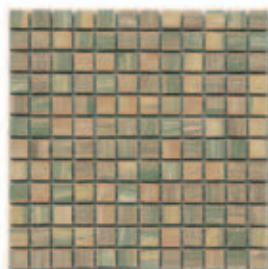
Art. 0869 Bucchero* 30x30 M9 - M8



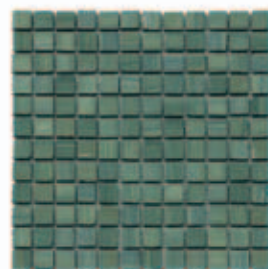
Art. 0867 Ambra* 30x30 M9 - M8



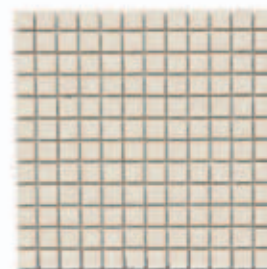
Art. 0868 Sabbia* 30x30 M9 - M8



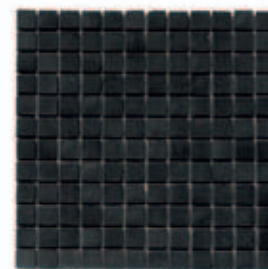
Art. 0870 Muschiato* 30x30 M9 - M8



Art. 0858 Terra verde 30x30 M9 - M8



Art. 0865 Salino* 30x30 M9 - M8



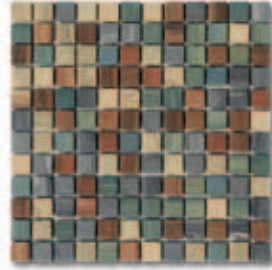
Art. 0861 Nero 30x30 M12 - M10

SERIE PALAZZI

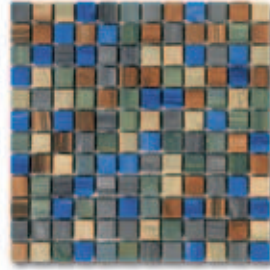
Colori mixati su rete cm 30x30 - Blended colours mounted on a nylon mesh size 30x30 cm



Art. 0878 Palazzo Vecchio 30x30 M14 - M12



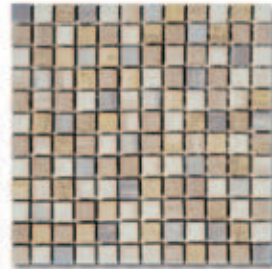
Art. 0879 Palazzo Pitti 30x30 M14 - M12



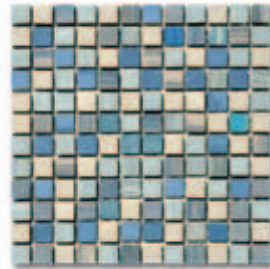
Art. 0880 Palazzo Strozzi 30x30 M14 - M12



Art. 0881 Palazzo Farnesina 30x30 M14 - M12



Art. 0882 Palazzo Diamanti 30x30 M14 - M12



Art. 0883 Palazzo Grassi 30x30 M14 - M12

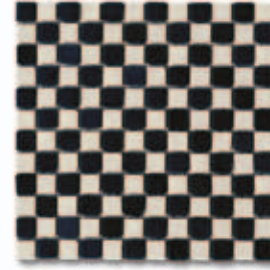


Art. 0960 Mix terre colorate 30x30 M13 - M11

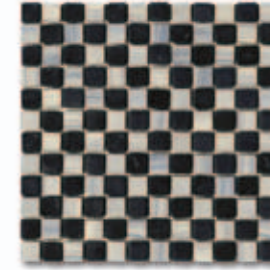
M - cod. Prezzo al Metro Quadro (quantità inferiore al pallet) M - cod. Prezzo al Metro Quadro (pallet completo)

DECORO SCACCHIERA SERIE DAMA

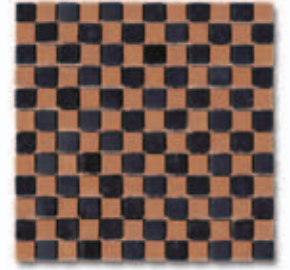
Gamma colori su rete cm 30x30 - Blended colours mounted on a nylon mesh size 30x30 cm



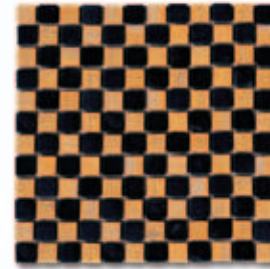
Art. 0888 nero/salino 30x30 M21 - M20



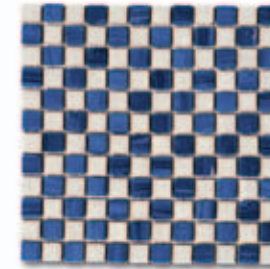
Art. 0889 nero/grigio freddo 30x30 M21 - M20



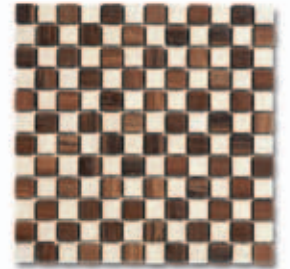
Art. 0890 nero/focato 30x30 M21 - M20



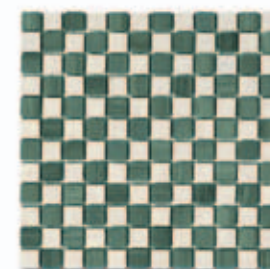
Art. 0891 nero/dorato 30x30 M21 - M20



Art. 0892 salino/oltremare 30x30 M21 - M20



Art. 0893 salino/noce 30x30 M21 - M20



Art. 0894 salino/terra verde 30x30 M21 - M20

M - cod. Prezzo al Metro Quadro (quantità inferiore al pallet) M - cod. Prezzo al Metro Quadro (pallet completo)

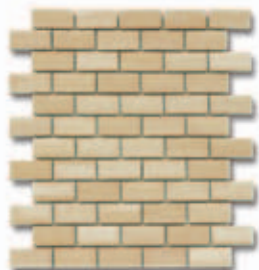
MOSAICI D'ITALIA

Gamma colori mattoncini a muretto su rete cm 27,5x30 - A range of 17 different colours mounted on a nylon mesh size 27,5x30 cm



Tessere cm 2,5x5x0,75 misura reale
Tessere 2,5x5x0,75 cm actual dimension

* con aggiunta di chamottes puntinate rustiche
* whit added rusticated speckled-effect chamottes



Art. 0916 Solare* 27,5x30 M9 - M8



Art. 0914 Noce* 27,5x30 M9 - M8



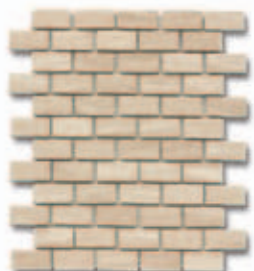
Art. 0898 Celestrino 27,5x30 M9 - M8



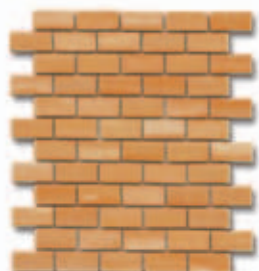
Art. 0917 Lapislazzuli* 27,5x30 M9 - M8



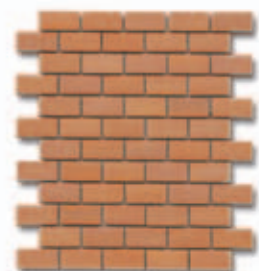
Art. 0903 Oltremare 27,5x30 M12 - M10



Art. 0902 Beige 27,5x30 M9 - M8



Art. 0909 Dorato* 27,5x30 M9 - M8



Art. 0915 Focato* 27,5x30 M9 - M8



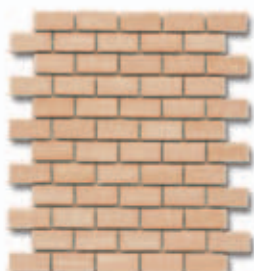
Art. 0899 Grigio caldo 27,5x30 M9 - M8



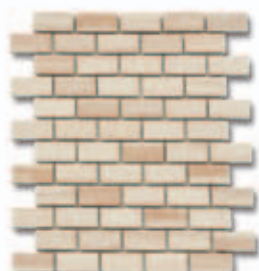
Art. 0900 Grigio freddo 27,5x30 M9 - M8



Art. 0912 Bucchero* 27,5x30 M9 - M8



Art. 0910 Ambra* 27,5x30 M9 - M8



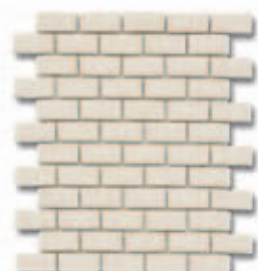
Art. 0911 Sabbia* 27,5x30 M9 - M8



Art. 0913 Muschiato* 27,5x30 M9 - M8



Art. 0901 Terra verde 27,5x30 M9 - M8



Art. 0908 Salino* 27,5x30 M9 - M8



Art. 0904 Nero 27,5x30 M12 - M10

M - cod. Prezzo al Metro Quadro (quantità inferiore al pallet) M - cod. Prezzo al Metro Quadro (pallet completo)

M - cod. Prezzo al Metro Quadro (quantità inferiore al pallet) M - cod. Prezzo al Metro Quadro (pallet completo)

MOSAICI D'ITALIA

Gamma colori mattoncini pitagora su rete cm 30x30 - A range of 17 different colours mounted on a nylon mesh size 30x30 cm



Tessere cm 2,5x5x0,75 misura reale
Tessere 2,5x5x0,75 cm actual dimension

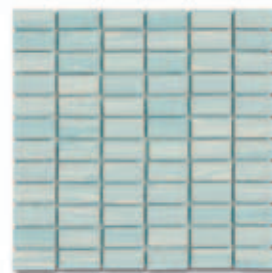
* con aggiunta di chamottes puntinate rustiche
* whit added rustivating speckled-effect chamottes



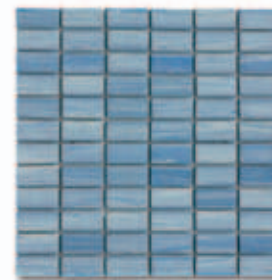
Art. 0940 Solare* 30x30 M9 - M8



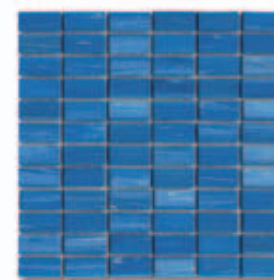
Art. 0938 Noce* 30x30 M9 - M8



Art. 0922 Celestrino 30x30 M9 - M8



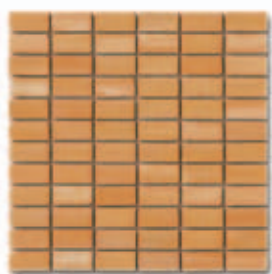
Art. 0941 Lapislazzuli* 30x30 M9 - M8



Art. 0927 Oltremare 30x30 M12 - M10



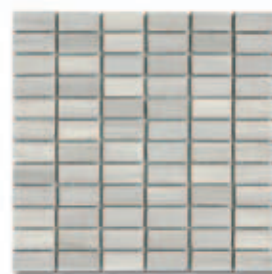
Art. 0926 Beige 30x30 M9 - M8



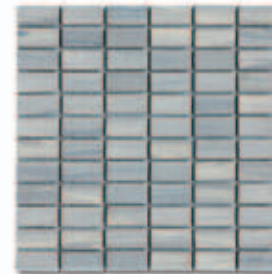
Art. 0933 Dorato* 30x30 M9 - M8



Art. 0939 Focato* 30x30 M9 - M8



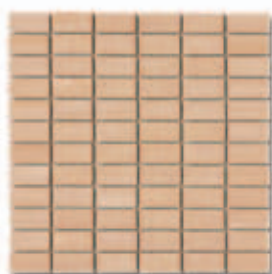
Art. 0923 Grigio caldo 30x30 M9 - M8



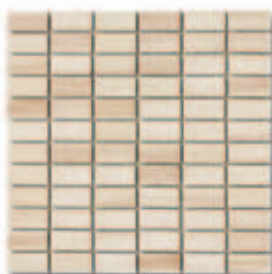
Art. 0924 Grigio freddo 30x30 M9 - M8



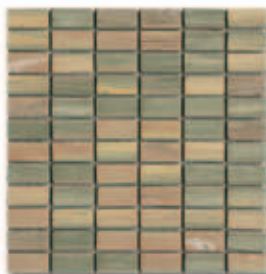
Art. 0936 Bucchero* 30x30 M9 - M8



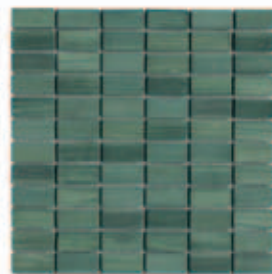
Art. 0934 Ambra* 30x30 M9 - M8



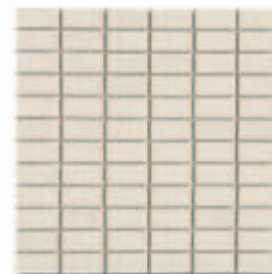
Art. 0935 Sabbia* 30x30 M9 - M8



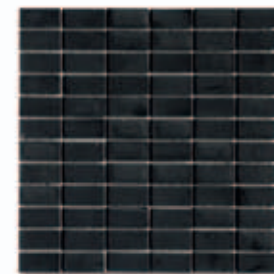
Art. 0937 Muschiato* 30x30 M9 - M8



Art. 0925 Terra verde 30x30 M9 - M8



Art. 0932 Salino* 30x30 M9 - M8



Art. 0928 Nero 30x30 M12 - M10

MOSAICI D'ITALIA

Gamma colori diamanti su rete cm 25,7x29,8 - A range of 17 different colours mounted on a nylon mesh size 25,7x29,8 cm



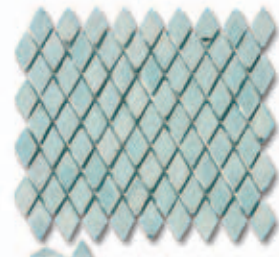
* con aggiunta di chamottes puntinate rustiche
* whit added rusticating speckled-effect chamottes



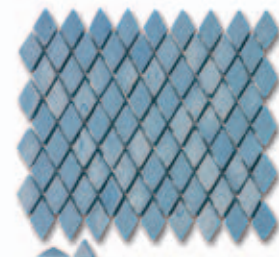
Art. 0991 Solare* 25,7x29,8 M13 - M11



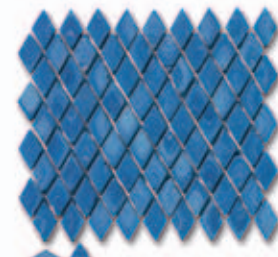
Art. 0989 Noce* 25,7x29,8 M13 - M11



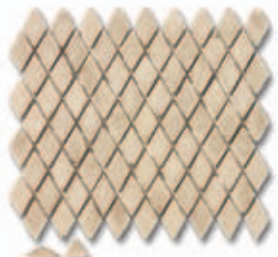
Art. 0976 Celestrino 25,7x29,8 M13 - M11



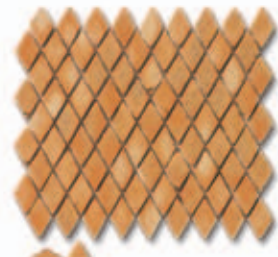
Art. 0992 Lapislazzuli* 25,7x29,8 M13 - M11



Art. 0981 Oltremare 25,7x29,8 M16 - M14



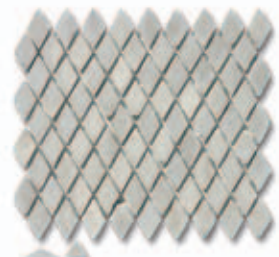
Art. 0980 Beige 25,7x29,8 M13 - M11



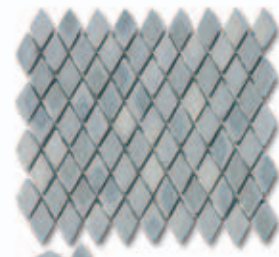
Art. 0984 Dorato* 25,7x29,8 M13 - M11



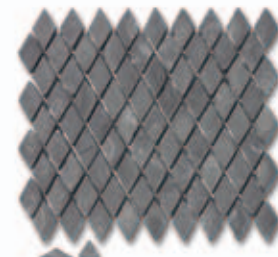
Art. 0990 Focato* 25,7x29,8 M13 - M11



Art. 0977 Grigio caldo 25,7x29,8 M13 - M11



Art. 0978 Grigio freddo 25,7x29,8 M13 - M11



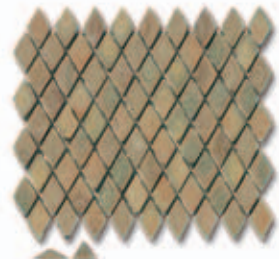
Art. 0987 Bucchero* 25,7x29,8 M13 - M11



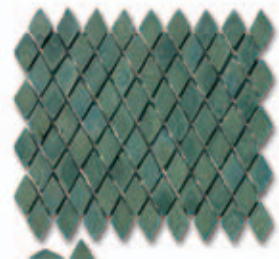
Art. 0985 Ambra* 25,7x29,8 M13 - M11



Art. 0986 Sabbia* 25,7x29,8 M13 - M11



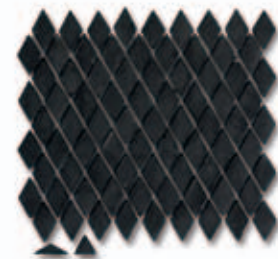
Art. 0988 Muschiato* 25,7x29,8 M13 - M11



Art. 0979 Terra verde 25,7x29,8 M13 - M11



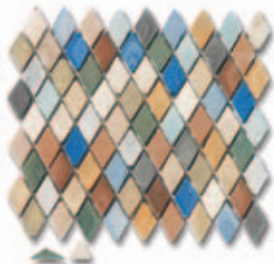
Art. 0983 Salino* 25,7x29,8 M13 - M11



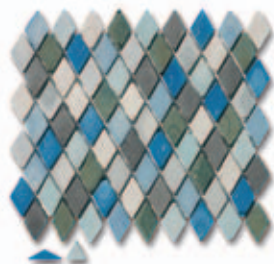
Art. 0982 Nero 25,7x29,8 M16 - M14

SERIE CARNEVALE

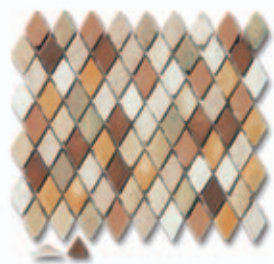
Colori mixati diamanti su rete cm 25,7x29,8 - Blended colours mounted on a nylon mesh size 25,7x29,8 cm



Art. 0993 Carnevale di Venezia 25,7x29,8 M19 - M17



Art. 0994 Carnevale di Cento 25,7x29,8 M19 - M17



Art. 0995 Carnevale di Viareggio 25,7x29,8 M19 - M17

M = cod. Prezzo al Metro Quadro (quantità inferiore al pallet) M = cod. Prezzo al Metro Quadro (pallet completo)



Una terra showroom picture - Darren Setlow photography



SERIE BRUNELLESCHI

Gamma colori mattoncini su rete cm 30x30 - A range of 17 different colours mounted on a nylon mesh size 30x30 cm



Mattoncini cm 1x5x1 misura reale
Mattoncini cm 1x5x1 actual dimension

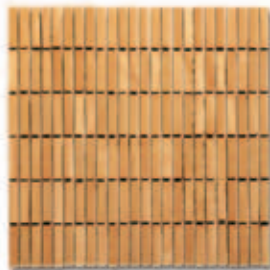
* con aggiunta di chamottes puntinate rustiche
* whit added rusticking speckled-effect chamottes



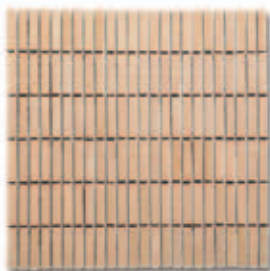
Art. B103 Beige 30x30 M13 - M11



Art. B101 Solare* 30x30 M13 - M11



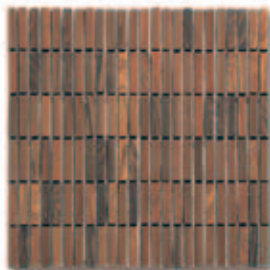
Art. B104 Dorato* 30x30 M13 - M11



Art. B106 Ambra* 30x30 M13 - M11



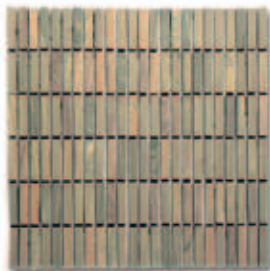
Art. B107 Sabbia* 30x30 M13 - M11



Art. B102 Noce* 30x30 M13 - M11



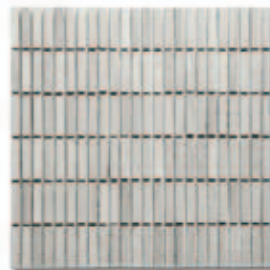
Art. B105 Terra Siena* 30x30 M13 - M11



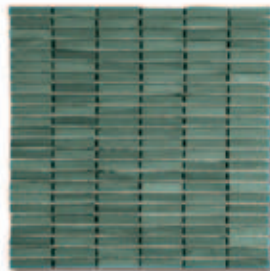
Art. B108 Muschiato* 30x30 M13 - M11



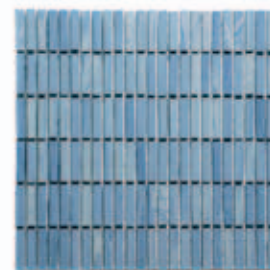
Art. B112 Celestrino 30x30 M13 - M11



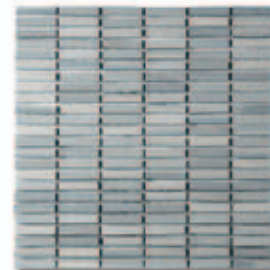
Art. B109 Grigio caldo 30x30 M13 - M11



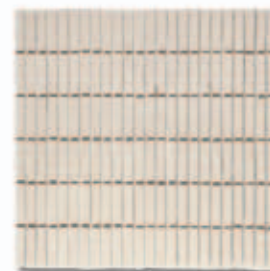
Art. B116 Terra verde 30x30 M13 - M11



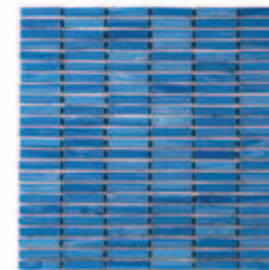
Art. B113 Lapislazzuli* 30x30 M13 - M11



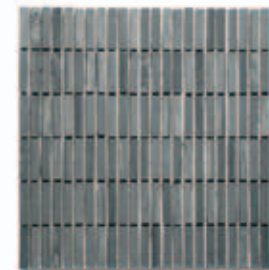
Art. B110 Grigio freddo 30x30 M13 - M11



Art. B115 Salino* 30x30 M13 - M11



Art. B114 Oltremare 30x30 M16 - M15



Art. B111 Bucchero* 30x30 M13 - M11



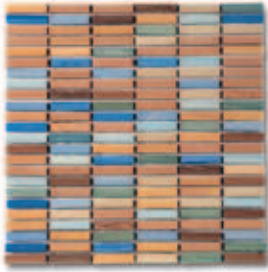
Art. B117 Nero 30x30 M16 - M15

M - cod. Prezzo al Metro Quadro (quantità inferiore al pallet) M - cod. Prezzo al Metro Quadro (pallet completo)

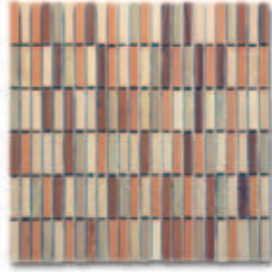
M - cod. Prezzo al Metro Quadro (quantità inferiore al pallet) M - cod. Prezzo al Metro Quadro (pallet completo)

SERIE BRUNELLESCHI MIX

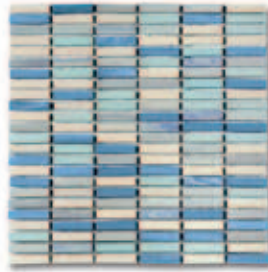
Colori mixati tessere su rete cm 30x30 - Blended colours mounted on a nylon mesh size 30x30 cm



Art. B201 Piazza della Signoria 30x30 M18 - M16



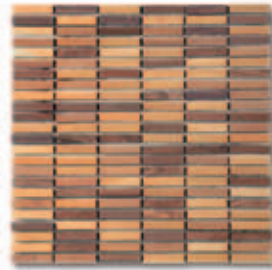
Art. B202 Piazza Navona 30x30 M18 - M16



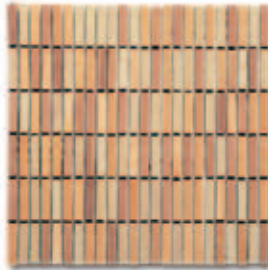
Art. B203 Piazza delle Erbe 30x30 M18 - M16



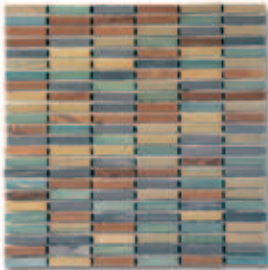
Art. B204 Piazza Plebiscito 30x30 M18 - M16



Art. B205 Piazza S. Marco 30x30 M18 - M16



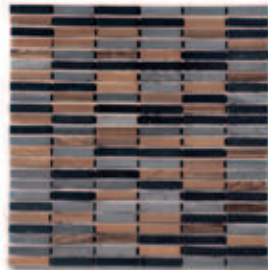
Art. B206 Piazza di Spagna 30x30 M18 - M16



Art. B207 Piazza del Campidoglio 30x30 M18 - M16



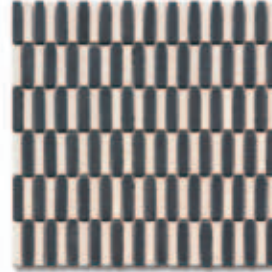
Art. B208 Piazza di Trevi 30x30 M18 - M16



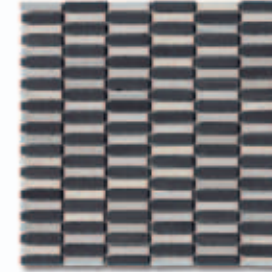
Art. B209 Piazza della Scala 30x30 M18 - M16

SERIE GIOTTO

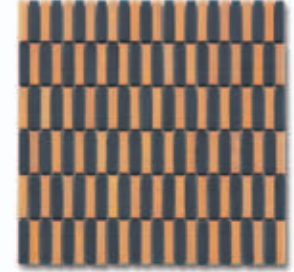
Mattoncini su rete cm 30x30 - Blended colours mounted on a nylon mesh size 30x30 cm



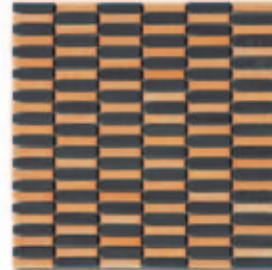
Art. 0945 nero/salino 30x30 M23 - M22



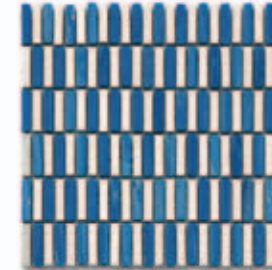
Art. 0946 nero/grigio freddo 30x30 M23 - M22



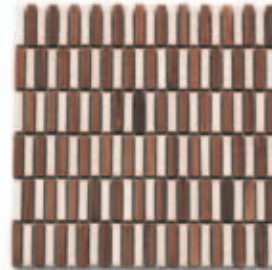
Art. 0947 nero/focato 30x30 M23 - M22



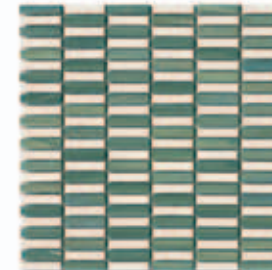
Art. 0948 nero/dorato 30x30 M23 - M22



Art. 0949 salino/oltremare 30x30 M23 - M22



Art. 0950 salino/noce 30x30 M23 - M22



Art. 0951 salino/terra verde 30x30 M23 - M22







COLLEZIONE ETRUSCA

L'unicità di un progetto musivo, frutto di ricerca e passione per l'autentico.

Il nome della collezione vuole comunicare gusto, stile, prodotto, tutto assolutamente ed esclusivamente italiano.

Un opus musivo inedito, diverso dai consueti canoni visivi del mosaico, con un alto valore estetico, in quanto smaltato con un leggero velo di vetro.

Nessuna tessera è ripetuta o riprodotta da stampi, le venature d'impasto sono dense e forti, il processo produttivo è esclusivo e protetto da due brevetti.

Totally Italian, in design, taste and style.... The name given to this collection says it all! The Etrusca Collection introduces a new visual and technological approach to the mosaic world. A thin layer of glass applied on the surface of each tessera enhances the colours and the mosaic details.

As in the old tradition, each little tessera is uniquely produced to avoid repetition in the pattern. The manufacturing process is protected by two patents.



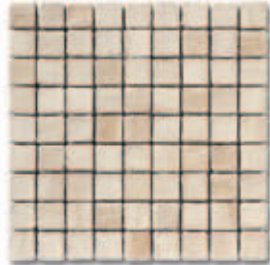
COLLEZIONE ETRUSCA

Gamma colori su rete cm 30x30 - A range of 13 different colours mounted on a nylon mesh size 30x30 cm

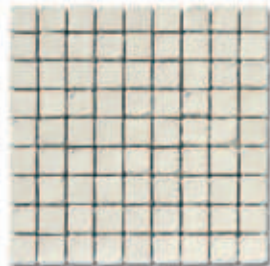


Tessere cm 3,3x3,3x1 misura reale
Dot 3,3x3,3x1 cm actual dimension

* con aggiunta di chamottes puntinate rustiche
* with added rustivating speckled-effect chamottes



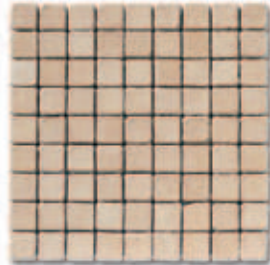
Art. E103 Sabbia* 30x30 M9 - M8



Art. E106 Gesso 30x30 M9 - M8



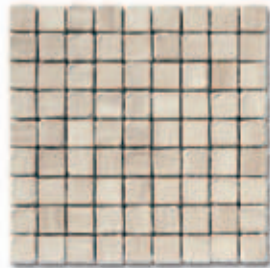
Art. E101 Solare* 30x30 M9 - M8



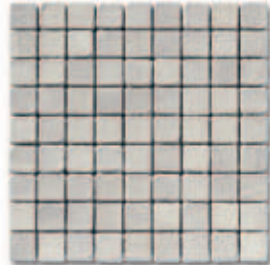
Art. E104 Ambra* 30x30 M9 - M8



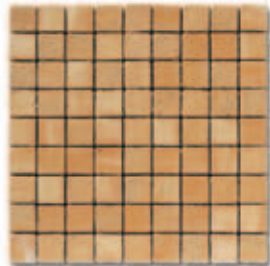
Art. E107 Noce* 30x30 M9 - M8



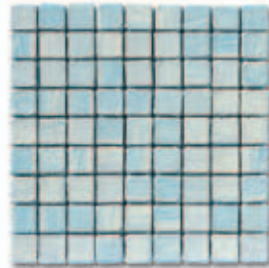
Art. E102 Beige 30x30 M9 - M8



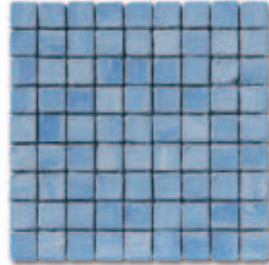
Art. E105 Grigio caldo 30x30 M9 - M8



Art. E108 Dorato* 30x30 M9 - M8



Art. E109 Celeste 30x30 M9 - M8



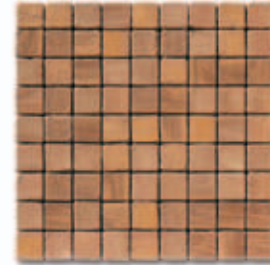
Art. E111 Lapislazzuli* 30x30 M9 - M8



Art. E113 Muschiato* 30x30 M9 - M8



Art. E110 Bucchero* 30x30 M9 - M8



Art. E112 Terra Siena* 30x30 M9 - M8



M = cod. Prezzo al Metro Quadro (quantità inferiore al pallet) M = cod. Prezzo al Metro Quadro (pallet completo)

M = cod. Prezzo al Metro Quadro (quantità inferiore al pallet) M = cod. Prezzo al Metro Quadro (pallet completo)

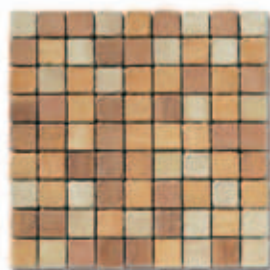


COLLEZIONE ETRUSCA

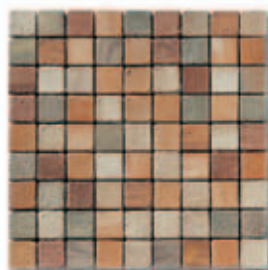
Colori mixati tessere su rete cm 30x30 - Blended colours mounted on a nylon mesh size 30x30 cm



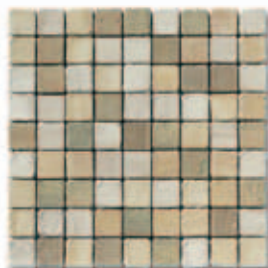
Art. E114 Vulci 30x30 M14 - M12



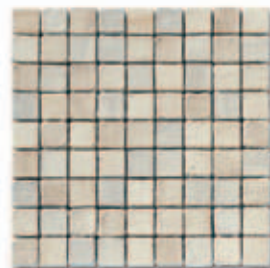
Art. E115 Toscana 30x30 M14 - M12



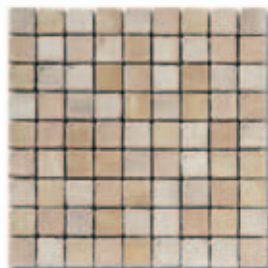
Art. E116 Veio 30x30 M14 - M12



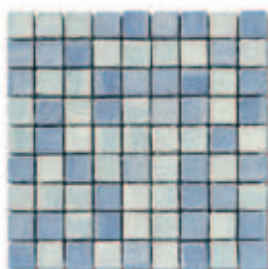
Art. E117 Tarquinia 30x30 M14 - M12



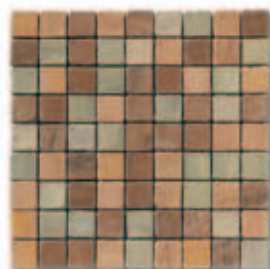
Art. E118 Cortona 30x30 M14 - M12



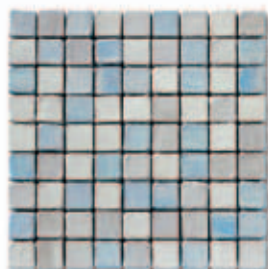
Art. E119 Volterra 30x30 M14 - M12



Art. E120 Vetulonia 30x30 M14 - M12



Art. E121 Spina 30x30 M14 - M12

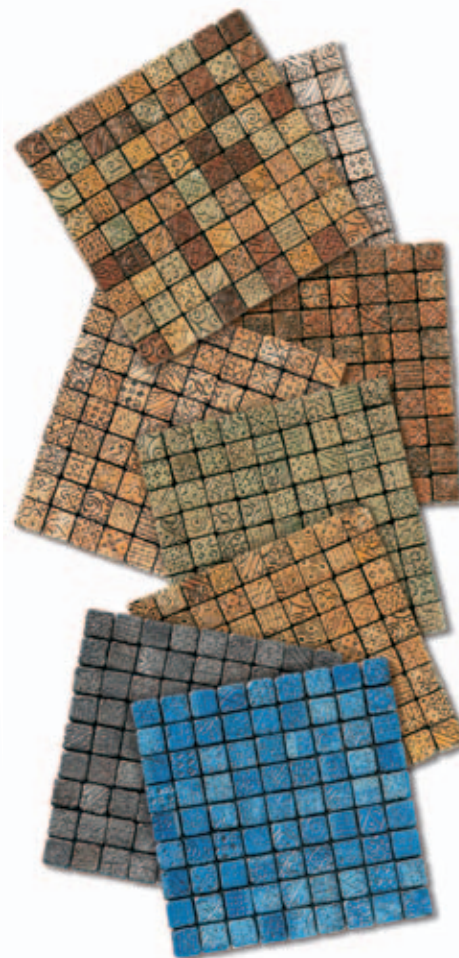


Art. E122 Cerveteri 30x30 M14 - M12

M = cod. Prezzo al Metro Quadro (quantità inferiore al pallet) M = cod. Prezzo al Metro Quadro (pallet completo)

SERIE FITTILE

Tessere su rete cm 30x30 - A range of 8 different colours mounted on a nylon mesh size 30x30 cm



P = cod. Prezzo al Pz. (quantità inferiore alla scatola) P = cod. Prezzo al Pz. (scatola completa)



Art. E185 Sabbia 30x30 P73 - P72



Art. E186 Noce 30x30 P73 - P72



Art. E187 Dorato 30x30 P73 - P72



Art. E188 Muschiato 30x30 P73 - P72



Art. E189 Terra Siena 30x30 P73 - P72



Art. E190 Bucchero 30x30 P73 - P72



Art. E191 Oltremare 30x30 P73 - P72



Art. E192 Mix 30x30 P73 - P72

SERIE ARMILLA

Mattoncini su rete cm 5x30 - A range of 8 different colours mounted on a nylon mesh size 5x30 cm



Art. E163 Sabbia 5x30

P40 - P69 - P68 - P67



Art. E164 Noce 5x30

P40 - P69 - P68 - P67



Art. E165 Dorato 5x30

P40 - P69 - P68 - P67



Art. E166 Terra Siena 5x30

P40 - P69 - P68 - P67



Art. E167 Muschiato 5x30

P40 - P69 - P68 - P67



Art. E168 Burchero 5x30

P40 - P69 - P68 - P67



Art. E169 Oltremare 5x30

P40 - P69 - P68 - P67



Art. E170 Mix 5x30

P40 - P69 - P68 - P67

SERIE CHIMERA

Mattoncini su rete cm 5x30 - A range of 7 different colours mounted on a nylon mesh size 5x30 cm.



Art. E171 Sabbia 5x30

P29 - P66 - P65 - P64



Art. E172 Salino 5x30

P29 - P66 - P65 - P64



Art. E173 Dorato 5x30

P29 - P66 - P65 - P64



Art. E174 Terra Siena 5x30

P29 - P66 - P65 - P64



Art. E175 Muschiato 5x30

P29 - P66 - P65 - P64



Art. E176 Burchero 5x30

P29 - P66 - P65 - P64



Art. E177 Oltremare 5x30

P29 - P66 - P65 - P64

SERIE LAPIS

cm 2,5x7,5x1,7

* con aggiunta di chamottes puntinate rustiche
* whit added rustivating speckled-effect chamottes



Art. E124 Noce* P6



Art. E127 Gesso P6



Art. E130 Muschiato* P6



Art. E133 Celeste P6



Art. E123 Solare* P6



Art. E125 Beige P6



Art. E128 Ambra* P6



Art. E131 Grigio caldo P6



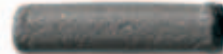
Art. E134 Lapislazzuli* P6



Art. E126 Dorato* P6



Art. E129 Sabbia* P6



Art. E132 Bucchero* P6



Art. E135 Terra Siena* P6

Misura reale
Actual dimension

SERIE LAPIS GRAFFITI

cm 2,5x7,5x1,7



Art. E137 Noce P59



Art. E140 Muschiato P59



Art. E136 Sabbia P59



Art. E138 Dorato P59



Art. E141 Bucchero P59



Art. E139 Terra Siena P59



Art. E142 Oltremare P59

Misura reale
Actual dimension

SERIE MAGNUS

cm 3,3x10x1,7



Art. E143 Solare P58



Art. E144 Noce P58



Art. E146 Dorato P58



Art. E148 Ambra P58



Art. E150 Muschiato P58



Art. E152 Bucchero P58



Art. E154 Lapislazzuli P58



Art. E145 Beige P58



Art. E147 Gesso P58



Art. E149 Sabbia P58



Art. E151 Grigio caldo P58



Art. E153 Celeste P58



Art. E155 Terra Siena P58

Misura reale
Actual dimension

SERIE MAGNUS GRAFFITI

cm 3,3x10x1,7



Art. E156 Sabbia P60



Art. E157 Noce P60



Art. E158 Dorato P60



Art. E159 Terra Siena P60



Art. E160 Muschiato P60



Art. E161 Bucchero P60



Art. E162 Oltremare P60

SERIE FIMBRIA

Mattoncini su rete cm 1x29,5 - A range of 7 different colours mounted on a nylon mesh size 1x29,5 cm



Art. E178 Sabbia 1x29,5 ca.

P63 - P62 - P61 - P16



Art. E179 Noce 1x29,5 ca.

P63 - P62 - P61 - P16



Art. E180 Dorato 1x29,5 ca.

P63 - P62 - P61 - P16



Art. E181 Terra Siena 1x29,5 ca.

P63 - P62 - P61 - P16



Art. E182 Muschiato 1x29,5 ca.

P63 - P62 - P61 - P16



Art. E183 Bucchero 1x29,5 ca.

P63 - P62 - P61 - P16



Art. E184 Oltremare 1x29,5 ca.

P63 - P62 - P61 - P16





GRAN SASSO
NOVITÀ

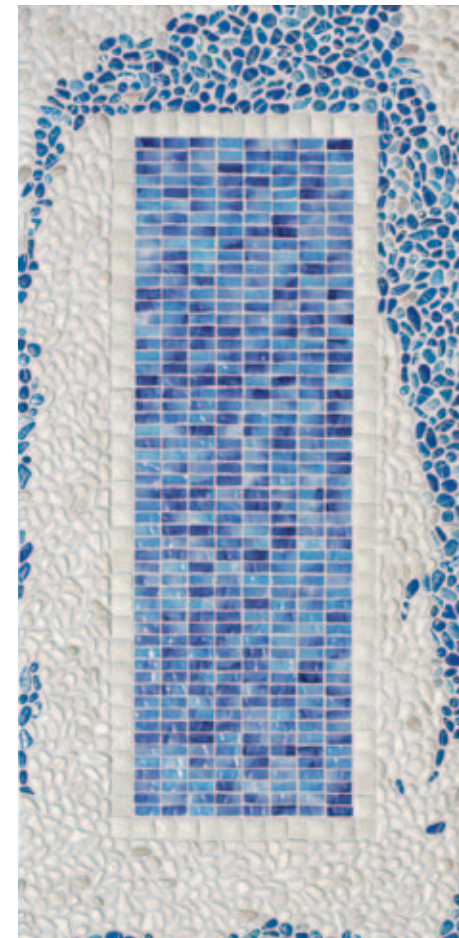


I SASSI di SASSUOLO

Ogni pezzo è unico e irripetibile, la manualità è la stessa del passato. La personale creatività artistica del manufatto non ricalca gli schemi classici ceramici ma vive una dimensione tutta sua, voluta da Francesco Marchetti.

Cosa ci ha spinto a creare un prodotto tanto insolito come i "Sassi di Sassuolo"? L'idea è nata osservando il nostro mondo ceramico, in particolare dalla grandiosa evoluzione del prodotto "gres porcellanato", che ormai spazia dagli interni ed esterni ad uso privato, alle grandi opere pubbliche (impianti sportivi, piscine, complessi alberghieri, etc...), fino all'arredo urbano. Dato questo impiego, il "gres porcellanato" deve essere affiancato da una veste decorativa alla sua altezza nei colori e nelle geometrie, considerando anche le condizioni estreme a cui viene sottoposto. Deve quindi garantire grande resistenza al forte calpestio, all'usura, alle intemperie e agli agenti chimici. I "Sassi di Sassuolo" non sono pezzi smaltati e poi decorati, ma un prodotto ceramico ottenuto colando purissimo "gres porcellanato". Viene colorato in massa nella sua splendida melangiatura naturale, oppure con colorazioni ricercate da abbinare a contesti architettonici particolari. Tutte queste melangiature, queste tonalità venate sono uniche e irripetibili. Ogni pezzo è un pezzo unico. I "Sassi di Sassuolo" vengono prodotti esclusivamente con procedimenti artigianali, sono interamente lavorati a mano per collaggio, le caratteristiche estetiche e tecnologiche sono inedite. BREVETTO EUROPEO.

Each individual piece is unique; the manual skill necessary to produce each piece is that of the original artisans. The classical ceramic schemes meet the artistic creativity of Francesco Marchetti. What has led us to create such an unusual product as "Sassi di Sassuolo"? The idea came to us from an observation of our ceramics world. We were struck in particular by the immense growth in the porcelain stoneware products used indoors and out, in private settings, as well as in large public projects (sport facilities, swimming-pools, hotel complexes, etc.), and even as street pavements. To meet the demands of the market and comply with the needs/requirements imposed by the commercial applications, we've allowed for the following: great performance with exposure to both environmental and chemical agents, encompassing vitrified stoneware needed in decorative images and allowing infinite colours and shapes option at highest standards. "Sassi di Sassuolo" is a product obtained by casting the purest porcelain stoneware and not the result of glazing and decorating porcelain tile. The whole body is cast with its splendid natural mixture of shades, or with sophisticated combinations of colours to meet the requirements of architectural demand. The mixed or veined colours are unique, unrepeatable and create distinctive items. We can say without doubt that each little stone is a one of a kind piece. "Sassi di Sassuolo" is produced solely using handcraft techniques: the entire casting process is carried out by hand, and their appearance and technological characteristics are original. EUROPEAN PATENT.



SASSO PIATTO ONDA

Gamma colori su rete/sfuso cm 30x30 - A range of 13 different colours mounted on a nylon mesh size 30x30 cm



Art. 3030 Siena Onda 30x30 M11
Art. 3031 Siena sfuso M10



Art. 3032 Blue Onda 30x30 M11
Art. 3033 Blue sfuso M10



Art. 3034 Acquamare Onda 30x30 M11
Art. 3035 Acquamare sfuso M10



Art. 3048 Sasso caldo Onda 30x30 M11
Art. 3049 Sasso caldo sfuso M10



Art. 3050 Sasso freddo Onda 30x30 M11
Art. 3051 Sasso freddo sfuso M10

GRAN SASSO
NOVITA



Art. 3060 Gran sasso Onda 30x30 M11
Art. 3061 Gran sasso sfuso M10



Art. 3036 Bronzo Ossido Onda 30x30 M11
Art. 3037 Bronzo Ossido sfuso M10



Art. 3038 Muschio Onda 30x30 M11
Art. 3039 Muschio sfuso M10



Art. 3040 Scabos Rosso Onda 30x30 M11
Art. 3041 Scabos Rosso sfuso M10



Art. 3003/c
Gera bianca ciotolo sfuso / loose pcs.
M15

M = cod. Prezzo al Metro Quadro

Le nostre formelle, grazie alla loro forma denominata ad "Onda", rappresentano un sistema ottimale per evitare le fastidiosissime righe di accostamento risultanti dalla posa.

To avoid visible grout joints and provide an easy installation, our tiles are mounted on an interlocked sheet.



Art. 3042 Scabos beige Onda 30x30 M11
Art. 3043 Scabos beige sfuso M10



Art. 3044 Sasso terra Onda 30x30 M11
Art. 3045 Sasso terra sfuso M10



Art. 3046 Antracite Onda 30x30 M11
Art. 3047 Antracite sfuso M10

SAXUM ORNATUS

Sasso naturale su rete - Natural stone



Art. 306/Onda Saxum Facilis 30x30 M19 - M17
Art. 314 sfuso M5



Art. 306 Saxum Facilis 30x30 P41



Art. 304 Saxum Linearis 10x30 P25



Art. 305 Saxum Linearis 15x30 P29

MOSAICO GIAREINA ONDA

Su rete/sfuso cm 30x30 - A range of 7 different colours mounted on a nylon mesh size 30x30 cm



Art. 7800 Ambra Onda 30x30 M13
Art. 7800 Ambra sfuso M10



Art. 7801 Blue Onda 30x30 M13
Art. 7801 Blue sfuso M10



Art. 7802 Acquamare Onda 30x30 M13
Art. 7802 Acquamare sfuso M10



Art. 7803 Bronzo Ossido Onda 30x30 M13
Art. 7803 Bronzo Ossido sfuso M10



Art. 7804 Scabos beige Onda 30x30 M13
Art. 7804 Scabos beige sfuso M10



Art. 7805 Sasso caldo Onda 30x30 M13
Art. 7805 Sasso caldo sfuso M10



Art. 8000 Superbianco Onda 30x30 M13
Art. 8000 Superbianco sfuso M10

Gli articoli presenti in questa pagina sono disponibili anche in formelle quadrate.

The items shown in this page are also available on square edges sheets, or loose in boxes of 0,5 sqm.

LA GHIAIETTA DEL FIUME SECCHIA

Su rete - Mounted on a nylon mesh



Art. 8001 Ghiaietta Superbianco 15x30 P37



Art. 8002 Ghiaietta Superbianco 10x30 P29



Art. 8003 Ghiaietta Superbianco 3x30 P24



Art. 8004 15x30 P43



Art. 8005 10x30 P42



Art. 8006 Multicolor 3x30 P31
Art. 8006 Multicolor sfuso M25



Art. 8007* 15x30 P43

*Fascia costruita con ghiaietta Secchia Sperlancio e sassolino Multicolor. La piccola diversità di spessore crea una leggera torsatura della fascia colorata che si sviluppa diritta anziché sinuosa.

FASCE VARANA

Su rete - Mounted on a nylon mesh



Art. 3401 Blue 5x30 P25



Art. 3402 Ametista 5x30 P25



Art. 3403 Verde 5x30 P25



Art. 3404 Ocra 5x30 P25



Art. 3405 Mix 5x30 P25



Art. 3400 Sfuso mix 5x5 P7

LA FORNACE DI MARANELLO



Art. 0602 Mattone Bianco 4x15 * P4



Art. 0603 Mattone Cotto 4x15 * P4

* Disponibile su rete - Available mounted on a nylon mesh

FASCE PESCALE

Su rete - Mounted on a nylon mesh



Art. 3501 Blue 3,7x30 P27



Art. 3502 Ametista 3,7x30 P27



Art. 3503 Verde 3,7x30 P27



Art. 3504 Ocra 3,7x30 P27



Art. 3505 Mix 3,7x30 P27



Art. 3500 Sfuso mix 3,7x3,7 P6

FASCE VILLA SEGRÈ

Su rete - Mounted on a nylon mesh



Art. 3301 Superbianco 3,5x30 P26



Art. 3302 Multicolor 3,5x30 P31



Art. 3303 Scabos Beige 3,5x30 P26



Art. 3304 Scabos rosso 3,5x30 P26



Art. 3305 Blue 3,5x30 P31



Art. 3306 Ametista 3,5x30 P31



Art. 3307 Verde 3,5x30 P31



Art. 3308 Ocra 3,5x30 P31



Art. 3300 Sfuso mix 3,5x3,5 M24

FASCE SAN MICHELE

Su rete - Mounted on a nylon mesh



Art. 3201 Superbianco 10x30 P31



Art. 3202 Siena 10x30 P31



Art. 3203 Blue 10x30 P31



Art. 3204 Acquamare 10x30 P31



Art. 3205 Muschio 10x30 P31



Art. 3206 Bronzo Ossido 10x30 P31



Art. 3207 Sasso Terra 10x30 P31



Art. 3208 Scabos Rosso 10x30 P31



Art. 3209 Scabos Beige 10x30 P31



Art. 3210 Antracite 10x30 P31



Art. 3211 Sasso caldo 10x30 P31



Art. 3212 Sasso freddo 10x30 P31

P = cod. Prezzo al Pz. M = cod. Prezzo al Metro Quadro

FOSSILI VERDI



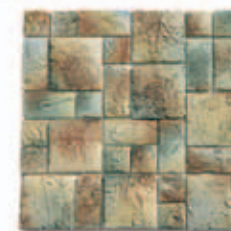
Art. 7910 decoro mix 10x10 P17



Art. 7911 decoro mix 5x10 P12



Art. 7912 decoro mix 5x5 P8

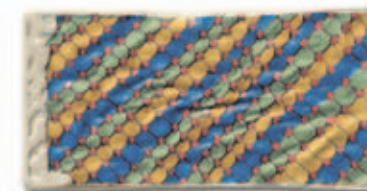


Alcuni soggetti della serie
Some patterns of the serie

FILIGRES



Art. 7000 decoro mix 10x10 P17



Art. 7001 decoro mix 5x10 P12



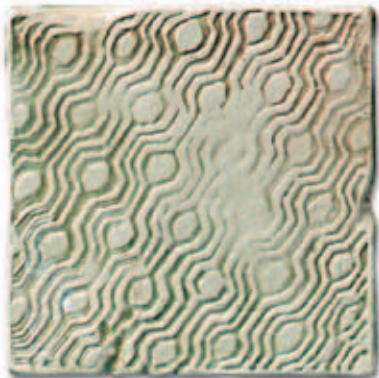
Art. 7002 decoro mix 5x5 P8



Alcuni soggetti della serie
Some patterns of the serie

P = cod. Prezzo al Pz.

MELANGE TABACCO



Art. 6003/T decoro mix 10x10

P15



Art. 6002/T decoro mix 5x10 P12



Art. 6001/T decoro mix 5x5 P8



Alcuni soggetti della serie
Some patterns of the serie

MELANGE VERDE RAMATO



Art. 6003/V decoro mix 10x10

P15



Art. 6002/V decoro mix 5x10 P12



Art. 6001/V decoro mix 5x5 P8



Alcuni soggetti della serie
Some patterns of the serie

P = cod. Prezzo al Pz.

TEX GRES BIANCO



Art. 7700 decoro mix 10x10

P4



Art. 7701 decoro mix 5x10 P3



Art. 7702 decoro mix 5x5 P1



Alcuni soggetti della serie
Some patterns of the serie

MELANGE TABACCO



Art. 6008/T 3,7x30

P33



Art. 6006/T 5x30

P30



Art. 6004/T 5x30

P29

P = cod. Prezzo al Pz.

MELANGE VERDE RAMATO



Art. 6009/V 3,7x30

P33



Art. 6007/V 5x30

P30

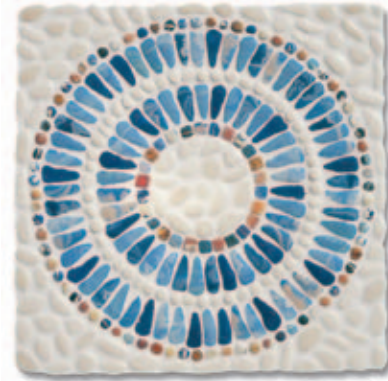


Art. 6005/V 5x30

P29



MONTALE



Art. 3022 versione fredda 90x90
Disponibile anche nella versione calda

P56



CORLO






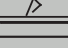







Art. 3026 su rete 90x90






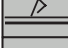



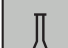

P56



SPECIFICHE TECNICHE - MOSAICI D' ITALIA - Valori medi riscontrati su Campioni esaminati dal Centro Ceramico di Bologna

	PROPRIETÀ FISICO-CHIMICHE PHYSICAL-CHEMICAL PROPERTIES PSYCH-CHEMISCHE EIGENSCHAFTEN PROPRIÉTÉS PHYSICO-CHIMIQUES	NORMA NORM NORM NORME	VALORE PRESCRITTO REQUIRED VALUE VORGESCHRIEBENER WERT VALEUR PRESCRITE	
	Resistenza al gelo Frost resistance Frostbeständigkeit Resistance au gel	UNI EN ISO 10545-12	Numero di piastrelle danneggiate dopo 100 cicli tra -5°C e +5°C : 0	Conforme alle norme Conforms Konform Conforme
	Resistenza agli sbalzi termici Thermal shock resistance Temperaturwechselbeständigkeit Resistance aux écarts de température	UNI EN ISO 10545-9	Numero di campioni di prova con difetti visibili : 0	Conforme alle norme Conforms Konform Conforme
	Coefficiente di attrito Friction coefficient Reibungskoeffizient Coefficient de friction	ASTM C 1028-96	Condizione della superficie di prova: Asciutta Coefficiente di attrito medio: Condizione della superficie di prova: Bagnata (saturata con acqua distillata) Coefficiente di attrito medio:	(μ) 0,59 (μ) 0,49
	Resistenza allo scivolamento Slipping resistance Rutschhemmung Résistance au glissement	B. C. R	ELEMENTO SCIVOLANTE CONDIZIONE DELLA SUPERFICIE DI PROVA (Cuoio Gomma Gomma Asciutta Bagnata (acqua + agente bagnante) Asciutta)	(μ) 0,25 (μ) 0,58 (μ) 0,59
	Determinazione allo scivolamento Slipping determination Rutschfestigkeit Détermination au glissement	DIN 51097	Angolo medio di scivolamento: Campo di applicazione:	>33° A+B+C
	Resistenza allo scivolamento Slipping resistance Rutschhemmung Résistance au glissement	DIN 51130	Classificazione (BGR 181 - 10/2003) Gruppo di resistenza allo scivolamento Gruppo relativo al volume della compressione Condizione della superficie Angolo totale di accettazione - valore medio: Volume di compressione (cm ³ /dm ²):	R10 — LISCIA 12,7° —
	Assorbimento d' acqua Water absorption Wasseraufnahme Absorption d'eau	UNI EN ISO 10545-3	Mediante ebollizione medio % Sotto vuoto medio %	E(b) 0,2 E(v) 0,2
	Resistenza alle macchie Stain resistance Flecken beständigkeit Resistance au taches	UNI EN ISO 10545-14	Verde cromo in olio leggero Iodio (soluzione alcalica 13 g/l) Olio d' oliva (def. Olive Oil agreement - 1979)	Classe 5 Classe 5 Classe 5
	Resistenza ai prodotti chimici Chemical resistance Chemikalienfestigkeit Resistance aux produits chimiques	UNI EN ISO 10545-13 § 7	Prodotti chimici d'uso domestico: Cloruro d'ammonio 100 g/l Additivi per piscina: Ipotorito di sodio 20 mg/l Acidi: Acido cloridrico 3 % V/V Acido citrico 100 g/l Basi: Idrossido di potassio 30 g/l Acidi: Acido Cloridrico 18 % V/V Acido Lattico 5 % V/V Basi: Idrossido di potassio 100 g/l	Classe A Classe A Classe A Classe A Classe A Classe A Classe A Classe A
	Resistenza all' abrasione profonda Deep abrasion resistance Beständigkeit gegen tiefen abrieb Resistance à l'abrasion profonde	UNI EN ISO 10545-6	Volume medio di materiale asportato V _m	(mm ³) 114

SPECIFICHE TECNICHE - COLLEZIONE ETRUSCA - Valori medi riscontrati su Campioni esaminati dal Centro Ceramico di Bologna

	PROPRIETÀ FISICO-CHIMICHE PHYSICAL-CHEMICAL PROPERTIES PSYCH-CHEMISCHE EIGENSCHAFTEN PROPRIÉTÉS PHYSICO-CHIMIQUES	NORMA NORM NORM NORME	VALORE PRESCRITTO REQUIRED VALUE VORGESCHRIEBENER WERT VALEUR PRESCRITE	
	Resistenza al gelo Frost resistance Frostbeständigkeit Résistance au gel	UNI EN ISO 10545-12	Numero di piastrelle danneggiate dopo 100 cicli tra -5°C e +5°C : 0	Conforme alle norme Conforms Konform Conforme
	Resistenza agli sbalzi termici Thermal shock resistance Temperaturwechselbeständigkeit Résistance aux écarts de température	UNI EN ISO 10545-9	Numero di campioni di prova con difetti visibili : 0	Conforme alle norme Conforms Konform Conforme
	Coefficiente di attrito Friction coefficient Reibungskoeffizient Coefficient de friction	ASTM C 1028-96	Condizione della superficie di prova: Asciutta Coefficiente di attrito medio: Condizione della superficie di prova: Bagnata (saturata con acqua distillata) Coefficiente di attrito medio:	(μ) 0,70 (μ) 0,66
	Resistenza allo scivolamento Slipping resistance Rutschhemmung Résistance au glissement	B. C. R	ELEMENTO SCIVOLANTE CONDIZIONE DELLA SUPERFICIE DI PROVA (Cuoio Gomma Gomma Asciutta Bagnata (acqua + agente bagnante) Asciutta)	(μ) 0,46 (μ) 0,63
	Determinazione allo scivolamento Slipping determination Rutschfestigkeit Détermination au glissement	DIN 51097	Angolo di scivolamento: Campo di applicazione:	26° A+B+C
	Resistenza allo scivolamento Slipping resistance Rutschhemmung Résistance au glissement	DIN 51130	Classificazione (BGR 181 - 10/2003) Gruppo di resistenza allo scivolamento Angolo totale di accettazione - valore medio:	R10 14°
	Assorbimento d' acqua Water absorption Wasseraufnahme Absorption d'eau	UNI EN ISO 10545-3	Mediante ebollizione - medio %	E(b) 0,2
	Resistenza alle macchie Stain resistance Flecken beständigkeit Resistance au taches	UNI EN ISO 10545-14	Verde cromo in olio leggero Iodio (soluzione alcalica 13 g/l) Olio d' oliva (def. Olive Oil agreement - 1979)	Classe 5 Classe 5 Classe 5
	Resistenza ai prodotti chimici Chemical resistance Chemikalienfestigkeit Resistance aux produits chimiques	UNI EN ISO 10545-13 § 7	Prodotti chimici d'uso domestico: Cloruro d'ammonio 100 g/l Additivi per piscina: Ipotorito di sodio 20 mg/l Acidi: Acido cloridrico 3 % V/V Acido citrico 100 g/l Basi: Idrossido di potassio 30 g/l Acidi: Acido Cloridrico 18 % V/V Acido Lattico 5 % V/V Basi: Idrossido di potassio 100 g/l	Classe A Classe A Classe A Classe A Classe A Classe A Classe A Classe A
	Resistenza all' abrasione profonda Deep abrasion resistance Beständigkeit gegen tiefen abrieb Résistance à l'abrasion profonde	UNI EN ISO 10545-6	Volume medio di materiale asportato V _m	(mm ³) 98

CONDIZIONI GENERALI DI VENDITA

1) APPLICABILITA' DELLE CONDIZIONI GENERALI DI VENDITA

Le presenti condizioni generali di vendita si considerano conosciute da tutti i Clienti e saranno quindi applicate a ciascun ordine di acquisto ricevuto da Ker-Av S.r.l. diventandone parte integrante e sostanziale.

Eventuali diverse condizioni di vendita previste su l'ordine d'acquisto, se in contrasto le presenti condizioni generali, saranno valide e applicabili solo e unicamente se esplicitamente accettate da Ker-Av S.r.l.

2) CARATTERISTICHE ESTETICHE DEL MATERIALE

I colori e le tonalità dei prodotti consegnati potranno divergere, nei limiti delle normali tolleranze industriali, rispetto ai campioni in possesso del Cliente. Non potrà inoltre essere garantito il perfetto rispetto della tonalità in caso di completamenti richiesti a distanza di tempo della fornitura principale e quindi non facenti parte della medesima partita industriale.

Le scheggiature presenti nelle tessere sono ottenute per rotolamento meccanico eseguito in appositi cilindri o vibratorii.

Questo processo serve per conferire al prodotto una sorta di invecchiamento e a togliere qualsiasi sporgenza tagliente.

Tale aspetto non è quindi un difetto ma una caratteristica dei nostri mosaici.

3) TERMINI DI CONSEGNA

Il termine di consegna o spedizione da noi comunicati nella conferma d'ordine hanno valore indicativo.

I termini di consegna potranno comunque essere da noi variati unilateralmente in casi di forza maggiore senza che ciò dia titolo al Cliente a richieste di risarcimento danni o a risoluzione, anche parziale, del contratto.

Al fine del riscontro della consegna dei materiali farà fede la data di comunicazione di "merce pronta" o in subordine la data di emissione del documento di trasporto.

4) RECLAMI / RESO DI MATERIALE

Le richieste di reso, indipendentemente delle motivazioni a supporto, dovranno essere trasmesse per iscritto nel termine tassativo di giorni 10 (di calendario) dal ricevimento della merce a Ker-Av S.r.l. e da questa autorizzate sempre per iscritto. L'autorizzazione al reso dovrà accompagnare la merce.

Non verrà in ogni caso accettato il reso conseguente da errore del cliente nella compilazione, comunicazione o trasmissione dell'ordine d'acquisto.

Nel caso la richiesta di reso discenda dalla fornitura di prodotti non corrispondenti da quelli precisati nella conferma d'ordine, fermi restando tempi e modalità della pratica di reso, Ker-Av S.r.l. verificata la fondatezza del reclamo, sarà esclusivamente obbligata alla sostituzione dei prodotti escluso qualsiasi diritto del Cliente a richiedere la risoluzione del contratto o il risarcimento di danni.

Il reso si intende franco ns. sede o ns. deposito salvo diversa indicazione nell'autorizzazione al reso e dovrà essere effettuato entro 30 giorni dalla nostra autorizzazione a pena di non accettazione.

Il materiale dovrà essere reso perfettamente integro e nella propria confezione originale anche se queste sono aperte.

La responsabilità per la perdita o per il danneggiamento del materiale resteranno ad esclusivo carico del Cliente fino al momento della materiale consegna presso di noi.

Ker-Av S.r.l. si riserva comunque la possibilità di addebitare al Cliente eventuali costi nel caso che, ricevuta la merce, risultasse immotivato il reclamo e il conseguente reso.

5) CONDIZIONI DI PAGAMENTO

Il pagamento delle forniture dovrà essere effettuato integralmente secondo le modalità concordate e specificate in fattura.

In caso di ritardo nel pagamento anche parziale delle nostre fatture, fatta salva ogni azione di valutazione o risarcimento danni, si avrà immediata decadenza dal termine di dilazione precedentemente concesso con conseguente facoltà di Ker-Av S.r.l. di richiedere l'integrale pagamento di tutte le partite aperte anche se non ancora scadute.

Gli interessi di mora, nella misura prevista dalle leggi tempo per tempo vigenti, decorreranno dalla data di scadenza del pagamento senza necessità di solleciti o ulteriori diffide di pagamento.

6) LAVORAZIONI SUCCESSIVE E POSA DEI MATERIALI

Ker-Av S.r.l. declina ogni responsabilità per difetti e/o vizi che dovessero essere imputabili a successive lavorazioni o ad operazioni di posa dei prodotti. Pertanto non saranno accettati reclami o richieste di risarcimento per danni derivanti da difetti causati durante le successive lavorazioni o l'attività di posa qualora le caratteristiche chimiche, fisiche, meccaniche e dimensionali dei materiali forniti risultino conformi alle norme con le quali il prodotto è stato ordinato.

GENERAL SALE CONDITIONS

1) APPLICABILITY OF THE GENERAL SALE CONDITIONS

We retain that all clients are aware of these general sale conditions and therefore said conditions will be applied to all purchase orders received by Ker-Av S.r.l., thus becoming an integral and substantial part of the order.

Eventual diverse sale conditions foreseen in the purchase order, if contrasting with those in the general sale conditions, will be valid and applicable only and solely if explicitly accepted by Ker-Av S.r.l.

2) AESTHETIC CHARACTERISTICS OF THE MATERIAL

The colours and tones of the delivered product may differ, within the limits of normal industrial tolerances, from the samples in the client's possession.

Also a perfect conformance to tone cannot be guaranteed in the event of re-orders made significantly later than the original supply and therefore not being part of the same industrial lot.

The scratches that are on the tiles are obtained by mechanical rolling performed in specific cylinders or vibrators.

The purpose of this process is to give the product an aged look and to remove any sharp edges.

This aspect is therefore not a defect but a characteristic of our mosaics.

3) DELIVERY TERMS

The delivery or shipping terms specified by us in the order confirmation are merely indicative. Therefore the delivery terms may be, unilaterally, varied by us in the event of unforeseeable and uncontrollable forces and will not be considered grounds for the client to request indemnity or partial or total resolution from the contract.

In regards to meeting delivery deadlines, the date on the "ready merchandise" notification will prevail, or subordinately, the date of the shipping document.

4) COMPLAINTS / RETURNED MATERIAL

The requests for returns, regardless of the reason, must be sent in writing to Ker-Av S.r.l. within and no later than 10 days from receipt of the merchandise and said request must be authorized in writing by Ker-Av S.r.l.

The return authorization must accompany the merchandise when returned.

In no circumstance will returned merchandise be accepted as a consequence of an error by the client in writing, communicating or transmitting the purchase order.

In the event that the returned merchandise is due to a supply of products that do not correspond to those specified in the order confirmation, terms and time limits for return procedures withstanding, Ker-Av S.r.l. will verify the grounds for the complaint and will only be obligated to substitute the products, therefore, excluding the client from requesting any indemnity or resolution of the contract.

The returns are to be ex-factory or our headquarters, unless otherwise specified in the return authorization and must be returned within 30 days from the date of our authorization otherwise they will not be accepted.

The material must be returned perfectly integral and in the original packaging, even if it has been opened. The client will be held exclusively responsible for loss or damage of the material being returned until it reaches our facilities.

Ker-Av S.r.l., nonetheless, reserves the right to debit the client for any eventual costs incurred in receiving merchandise when the complaint and consequent return is without justifiable motive.

5) PAYMENT CONDITIONS

Payment for the supply must be made according to the terms agreed upon and specified in the invoice.

In the event of late payment of the invoices, even partial, except in cases of evaluation of damages or damage indemnity, the payment instalment terms previously agreed upon will expire and Ker-Av S.r.l. will have the right to request full payment of all open lots even if they have not yet expired.

The interest on late payment, in the limits foreseen by law in the period in question, will be calculated beginning on the payment due date without the need of solicitation or other payment requests.

6) SUCCESSIVE TREATMENTS AND LAYING OF THE MATERIAL

Ker-Av S.r.l. declines all responsibilities for defects and/or flaws, which are imputable to successive treatments or laying of the product. Therefore, complaints or damage indemnity requests will not be accepted when deriving from defects caused during successive treatments or laying of the product when the chemical, mechanical, dimensional and physical characteristics of the material supplied are in conformance with the standards according to which the product was ordered.

IMBALLI Packing - Verpackung - Emballage

	SCATOLE/BOX				PALLET		
	FORMATO E SPESSORE cm.	PEZZI/PIECES	M ²	KG	SCATOLE/BOX	M ²	KG
FRAMMENTI & RIFLESSI	30x30x0,95 (7,5x7,5)	8	0,72	11,74	24	17,28	281,76
	30x30x0,95 (3,7x3,7)	8	0,72	9,88	24	17,28	237,12
	30x30x0,95 (2,5x2,5)	8	0,72	8,84	24	17,28	212,16
	30x30x0,95 (2,5x6 LINEARE)	8	0,72	10,42	24	17,28	250,08
	23,5x27x0,95 (2,5x6 MURETTO)	8	0,507	8,32	24	12,17	199,86
	7,5x30x0,95	12		4,04			
	3,7x30x0,95	24		3,64			
	5x30x0,95	15		4,14			
	1,6x30x0,95	36		3,56			
	LUCI di VENEZIA	30x30x0,95 (2,5x2,5)	8	0,72	10,860		
SERIE CARNEVAL	30x30x0,95 (2,5x5)	8	0,72	11,580			
	30x30x0,95 (2,5x10)	8	0,72	12,110			
MOSAICATO S.MARCO	1x30x0,95	20		1,345			
ACQUERELLI VENEZIANI	28x30x0,95	8	0,672	10,302			
LE CERAMICHE del GIUBILEO	30x30x0,9 (2,5x2,5)	8	0,72	10,6			
	30x30x0,9 (5x5)	8	0,72	11,7			
	7x7x0,9 (DECORI)	16		1,62			
	15x15x0,9 (OCTANGÒLA)	16		5,52			
	15x15x0,9	16		7,4			
	10x10x0,9 (DECORO PENNELLATI)	24	10	3,66			
	10x10x0,9	12		2,2			
	5x5x0,9	24		1,2			
	30x30x0,9	8	0,72	8,30			
	7,5x30x0,9	14		4,98			
5x30x0,9	18		4,3				
1,6x20x0,9	84		4,16				
MOSAICANDA MEDITERRANEA	30x30x0,7 (2,5x2,5)		0,90	10,200	24	21,60	246,24

Notes



KER-AV S.R.L.
Sede Legale-Amministrativa
Via L.Musso 3/5 - 41053 Maranello Mo
E-Mail: info@ker-av.com - Web: www.ker-av.com

Tel.Uff.Comm.le Italia:
(+39) 0536-94.64.15 - Fax (+39) 0536-94.07.28

Tel.Uff.Comm.le Comunità Europea:
(+39) 0536-94.68.35 - Fax (+39) 0536-93.11.03

Tel.Uff.Comm.le Extraccee:
(+39) 0536-93.37.50 - Fax (+39) 0536-93.11.04

Tel. Uff. Amministrativo 0536-94.34.08 - Fax 0536-93.11.00